



PO Box 314, Knox, IN. 46534
574-806-1799
Travelbybridgetllc@gmail.com



Travel By Bridget, LLC
Discover the Hawaii Islands
Oct 7, 2027 - Oct 16, 2027

Say "aloha" to paradise on an unforgettable cruise through the Hawaiian Islands! Enjoy lovely weather, fewer crowds, and breathtaking scenery as you sail from island to island, experiencing the unique charm of each tropical destination. From the black sand beaches of the Big Island and the lush rain-forests of Kauai to the dramatic cliffs of Nā Pali and the iconic shores of Waikiki, every day brings a new adventure. Onboard, indulge in island-inspired cuisine, cultural entertainment, and relaxing amenities—all without ever having to unpack more than once. It's the perfect blend of exploration and luxury, just as the islands intended.

October 7 - Thursday



DEPART FOR HONOLULU HAWAII

Depart Indiana for your flight from Chicago O'Hare Intl. Airport to Honolulu, Hawaii.



Chicago O'Hare International Airport (ORD)

10000 W O'Hare Ave, Chicago, IL, US, 60666
(800) 832-6352



ALOHA - WELCOME TO THE ISLAND OF OAHU, HAWAII

Located in the Pacific Ocean about 2,000 miles from the U.S. mainland, it is the only U.S. state outside North America, the only state that is an archipelago (cluster of islands), and the only state in the tropics.

On arrival, your Notch Above Tour Manager will be there to greet you and assist with your private transfers to your deluxe hotel accommodation. Check in at your centrally located hotel in the heart of Waikiki Beach for the next two nights.

Freshen up and meet your tour manager for suggestions and idea's before you begin to explore this beautiful area.

This evening is at your leisure to relax and enjoy what Waikiki Beach has to offer. Enjoy a stroll along the beach or sip on a cocktail while listening to local traditional music of the islands.

October 8 - Friday



PEARL HARBOR EXPERIENCE & CITY TOUR

Enjoy a full breakfast served at your hotel before meeting your Tour Manager and depart by private motor coach with a professional local guide for the next five hours to visit Pearl Harbor. This Hawaiian experience features time to browse the museums of the Pearl Harbor Visitor Center and a shuttle boat ride to the USS Arizona Memorial, (Subject to availability). Conclude your tour with a drive through the National Memorial Cemetery of the Pacific and Downtown Honolulu for up close views of Iolani Palace, the King Kamehameha statue and more.

- **Pearl Harbor Visitor Center** – Experience world-class museums, waterfront exhibits, the bookstore and more.
- **USS Arizona Memorial** – Take a shuttle boat ride to board the USS Arizona Memorial, a timeless landmark in American history. (Subject to availability).
- **National Memorial Cemetery of the Pacific*** – Drive through the dramatic natural setting of Punchbowl crater, now a peaceful memorial honoring the brave who served in the United States Armed Forces
- **Hawaii State Capitol District*** – View the unique architecture of Hawaii's state capitol building, the Eternal Flame, Washington Place and more.
- **Downtown Honolulu*** – Discover Hawaii's unique cultural heritage as we drive through Oahu's Chinatown and Maunakea Street lined with colorful lei shops and cafes.
- **Iolani Palace & King Kamehameha Statue*** – Delve into Hawaiian history as you view Iolani Palace, the only royal residence in the United States, the statue of King Kamehameha, Kawaiahao Church and more.

* Window view

Following the tour, the rest of the day and evening is for you to enjoy at your leisure and prepare for embarkation day tomorrow afternoon onboard the Pride of America Cruise Ship.

October 9 - Saturday



EMBARKATION DAY

Take the time for a leisurely breakfast before checking out of the hotel and boarding the motor coach with your Tour Manager for your transfers to the Pride of America Cruise Ship, your home for the next seven nights.

Immerse yourself in the rich culture, incredible landscapes, and delicious cuisine of Hawai'i on this one-of-a-kind 7-day cruise from Honolulu. Explore an island every day of your vacation – from the lush, fragrant vegetation of Kaua'i to the Big Island's dramatic volcanoes and the famous surfing beaches of Oahu. Where you can enjoy overnight stays in Maui and Kaua'i, giving you even more time to discover the best of island living. Where each day is spectacular, and every night is legendary. This is how you Hawai'i.

Your tour manager will be on hand to offer suggestions and assist as needed during your time onboard the Pride of America.



5:00 PM - DEPART FOR THE ISLANDS

Depart Honolulu for Kahului, Maui. Enjoy your first dinner onboard ship, get to know your way around and meet some of your fellow cruisers.

A surplus of natural splendor and the genuine hospitality of its people have helped to make Maui Hawaii's second most popular island. Explore the fascinating history of the town of Lahaina. Plant yourself on a pristine beach or play one of the world's most beautiful golf courses.

October 10 - Sunday



ARRIVAL 8:00 AM - KAHULUI-MAUI, HAWAII

Depart this morning on one of the many tour options the cruise line offers.

You may decide to discover the natural beauty and quirkiness of the island's North Shore through vastly different and revealing experiences. While browsing the boutiques in the former sugar plantation town of Pa'ia, you will get a genuine sense of its laid-back, bohemian ambiance. The shops tend to be colorful, somewhat eclectic and full of merchandise that you won't find elsewhere as it is often made locally. A leisurely one-mile walk through a nearby rain forest will bring you to two waterfalls, one of them is Twin Falls, a gorgeous cascade that plummets into a serene pool where you may swim if you wish. The setting couldn't be more relaxing or picturesque. The beauty of Ho'okipa Beach Park is equally captivating, especially the scene offshore as this is a premier spot for surfing and windsurfing because the waves are well-formed and sometimes reach heights of 30 feet. The beach is also one of the best places to see green sea turtles. Or you could take their four-hour Haleakala Crater at sunset tour and catch a glimpse of Haleakala, Maui's massive dormant volcano. You will go all the way to the top on this scenic journey – from sea level to 10,000 feet. At the summit is a vast crater seven and a half miles long by two and a half miles wide, and 3,000 feet deep. You'll marvel at the crater's eerie landscape of cinder cones and ancient lava formations. It last erupted in 1790 and has slumbered ever since, though that does not mean it won't one day wake up.

Following this tour return to the ship for the rest of the day and overnight stay in Maui.

October 11 - Monday



DEPARTURE 6:00 PM - KAHULUI -MAUI, HAWAII

The whole day is on your own to experience life on the Island of Maui, enjoy life onboard ship or choose an excursion of your choice before setting sail for Hilo, Hawaii.

October 12 - Tuesday



ARRIVAL 8:00 AM - HILO, HAWAII

The entire city of Hilo is like one giant greenhouse with spectacular tropical flowers at every turn. Visit the town's well-preserved historic buildings, which date back to the turn of the century and showcase Hawaii's unique architecture. Just 30 miles away the Hawaii Volcanoes National Park is the home of the active Kilauea Volcano.

An optional shore excursion could be "The Best of Hilo", Start your full day tour with a leisurely drive through the "Hilo Walk of Fame" known for all the banyan trees that have been planted by celebrities. Drive by Liliuokalani Gardens, the largest ornamental Japanese garden outside of Japan. Your experienced guide will provide commentary of Hilo Town as you make your way to Wailuku State Park and Rainbow Falls.

While visiting Akaka State Park, you can see two gorgeous waterfalls- 100-foot Kahuna Falls and towering Akaka Falls which plummets 422 feet into an eroded gorge. Stop at Pana'ewa Zoo the only naturally occurring rainforest zoo in the United States. Next, visit the Big Island Candies Store. Established in 1977, each of its delectable candies and cookies are hand-crafted in this factory store. View the production process and see what goes into making these world-famous Hawaiian treats. All products are made from only freshly roasted Big Island macadamia nuts and pure Kona and Ka'u coffee from farms on the Big Island. Since its founding, Big Island Candies has continuously introduced new and imaginative products that "wow" both the eyes and taste buds of its growing legion of fans.

Return to the Pride of America in preparation for the ship's departure at 6:00pm and our next port of call in Kona, Hawaii.

October 13 - Wednesday



ARRIVAL 7:00 AM - KAILUA-KONA, HAWAII

Kailua-Kona is a town on the west coast of Hawaii Island (the Big Island). Hulihee Palace is a former royal vacation home dating from 1838. Mokuaukaia Church, from the 1800s, is Hawaii's oldest Christian church. On Kailua Bay, reconstructed thatched houses at Kamakahonu National Historic Landmark mark King Kamehameha I's residence. Colorful coral lies off Kamakahonu Beach. Kailua Pier has boat moorings.

Kona offers the quintessential Hawaii experience. Sunny, warm weather and crystal blue waters entice visitors to partake in a variety of surfside fun. Snorkel amongst a kaleidoscope of tropical marine life. Take a surfing lesson, a kayaking trip, or head out to deeper waters for some deep-sea fishing. If you choose to participate, the "Historic Kona Cruise" is a three-hour excursion. Prepare to board your powered catamaran for a once in a lifetime cruise of Kona's history. Step aboard and step back in time, when ancient kings ruled the islands to the arrival of Captain Cook in Kealahou Bay. Witness many points of interest including Hawaiian temples known as Heiau, the Holua slide, battlefields, and the birthplace of King Kamehameha to mention a few. Enjoy a deli-style lunch upon boarding.

Any tour you register with through the cruise line will return you to the ship so you can enjoy the rest of your stay at your leisure.

The Pride of America sets sail for Kauai at 5:30pm.

October 14 - Thursday



ARRIVAL 8:00 AM - NAWILIWILI, HAWAII

Named after the Wiliwili trees, which once lined its picturesque harbor, this lovely port of Kaua'i is your gateway to what many believe to be Hawaii's most beautiful island. On "The Garden Island," nature is truly the star, from the dramatic mountains of Kokee to the cool rain forests of Haena. And the tradition of the luau adds lively entertainment unique to Hawaii.

Most of today is at your leisure before gathering with your fellow travelers for another included tour. The luau is an essential part of the Hawaiian experience, and the cultural extravaganza at the historic Kilohana Plantation is a feast for all the senses. You'll have the option to gather around the traditional fire pit and watch the roast pig emerge, a special treat to accompany the already lavish buffet of local delicacies and desserts. While torches blaze, graceful hulas and energetic fire dances will entertain you, and the ancient sea voyages that brought the original Hawaiians to these islands from Polynesia will be brought to life in story and song.

October 15 - Friday



DEPARTURE 2:00 PM - CRUISE THE NAPALI COASTLINE

This afternoon depart Kauai and set sail for Honolulu. The Napali coastline stretches fifteen miles along the north west coast of Kauai between Ke'e Beach in Haena State Park to Polihale State Park in Mana. This rugged coast will leave you breathless as you gaze upon the *pali* (high cliffs) that rise as much as 4,000 feet (1,200 m) above the Pacific Ocean, sea caves, lush green valleys and cascading waterfalls that journey to the shores from thousands of feet above.

This evening you will gather for dinner with your fellow travelers one last time to share some memories of this once in a lifetime bucket list tour. Following dinner, enjoy a show or take a walk around the deck before packing your belongings for the morning departure from The Pride of America Cruise Ship!

October 16 - Saturday



ARRIVAL 7:00 AM - HONOLULU, HAWAII

After breakfast you will debark the Pride of America and take in one more included shore excursion before transferring to the airport in preparation of your flight home!

Discover Oahu's North Shore – surf mecca and home to the perfect wave. Travel past pineapple and sugar cane fields to the island's well-known surfing beaches, stretching for seven miles along this coast. They include Waimea Bay, a prominent spot in the early days of big wave surfing in the 1950's, two-mile-long Sunset Beach, and the Banzai Pipeline, where waves breaking over a sharp reef make it one of the world's most dangerous surfing scenes.

Continue past shrimp farms and catch a glimpse of the small island known as Chinaman's Hat for its interesting shape. Shop for irresistible macadamia nuts and other local products at the Macadamia Nut Farm Outlet. On your way to the airport, you'll drop by the Byodo Temple, a scale replica of a temple in Japan constructed entirely without nails and surrounded by a lovely and tranquil garden.

Depart late afternoon from Honolulu Airport for your overnight flight home.

WE THANK YOU FOR TRAVELING WITH TRAVEL BY BRIDGET, LLC AND NOTCH ABOVE TOURS AND WISH YOU A GOOD JOURNEY HOME!

Information & Documents



YOUR PACKAGE INCLUDES:

- Motorcoach transportation to Chicago, O'Hare Airport
- Flights to Honolulu from Chicago, O'Hare Intl. Airport
- Airport transfers from Honolulu to hotel
- 2 - Nights' Deluxe hotel accommodation in Waikiki Beach, Oahu. Outrigger Waikiki Paradise Hotel or similar.
- Breakfast daily
- All meals during the 7-night cruise onboard Ship
- Private transportation with local professional guide to Pearl Harbor with City Tour. **Includes:** Pearl Harbor Visitor Center, USS Arizona Memorial, National Memorial Window view of Cemetery of the Pacific, Hawaii State Capitol District, Downtown Honolulu, & Iolani Palace & King Kamehameha Statue.
- Transfers from hotel to ship on embarkation day.
- 7 Nights cruising around the Hawaiian Islands onboard Norwegian Cruise Lines - Pride of America Cruise Ship.
- Luau Kalamaku in Kauai
- Discover Oahu's North Shore Excursion including transfers to Honolulu Airport
- Full time Tour Manager throughout
- Onboard Service Gratuities
- Beverage package gratuities
- Ultimate dining package service gratuities for window & above
- Gratuities - Airport transfers driver & Driver/Guide for Pearl Harbor tour
- Gratuities – Tour Manager
- Baggage handling, Airport – hotel, 1 bag per person
- Baggage handling, Hotel – Cruise ship – Airport, 1 bag per person
- Taxes & port fees

The following group amenities included based on cabin category:

***3rd & 4th guests are not eligible.**

Interior Cabin:

- Hawaii Beverage Package
- \$50 Shore Excursion credit per cabin

Oceanview & Above:

- Hawaii Beverage Package
- \$50 Shore Excursion credit per cabin
- One meal on specialty dining package, onboard ship for ocean view cabins, 3 meals for balcony cabins.
- Internet Package 150 minutes.

Beverage package for 3rd & 4th guest in a cabin - \$210.00pp.

Pricing Information:

The following NET prices are based on a minimum of 30 paid travelers.

Interior Cabin:

\$6,966.00 Per person based on double occupancy

\$9,550.00 Single

Obstructed Ocean View Cabin:

\$6,927.00 Per person based on double occupancy

\$9,452.00 Single

Balcony Cabin:

\$7,883.00 Per person based on double occupancy

\$11,325.00 Single

Not Included:

- Travel Protection coverage
- Pre cruise meals (lunch & dinner)
- Driver & local guide gratuities for all shore excursions while onboard the Pride of America.
- Airport meals
- Airline Checked bag - suggest \$120.00 per person round trip.

Cabin Category amounts on hold with NCL:

10: Interior - Forward, Mid or Aft. Sleeps up to 4 passengers

10: Obstructed Window - Forward, Mid or Aft, Sleeps up to 4 passengers

20: Balcony - Forward, Mid or Aft, sleeps up to 3 passengers

We will select the best available cabin location at the time of making the reservation on groups behalf, cabins and locations are all subject to availability.

Terms:

- Reservations for lodging, meals, transportation and attractions (where applicable) are all tentative and not confirmed until after a final registration has been made.
Individual cancellations within the group: Cancellations received after final payment has been made will not be refunded. Final payments are due March 16th, 2027.
A final itinerary with timing and contact information will be provided prior to departure date.

- \$500 per person deposit required with reservation.
Remaining balances can be divided into 7 monthly payments if you register before June 1st, 2026. Registrations received after June 1st 2026 will receive a prorated payment plan.
You may choose to pay for your trip all at once.
- Final payments are due March 16, 2027. There will be no refunds after this date so we strongly recommend travel insurance.
If you are going to purchase travel insurance please request a quote within 7 days of your initial deposit to avoid pre existing conditions being excluded.

Pride of America Ship Info



Pride of America

The Ship: As the only ship sailing year-round from Honolulu, Pride of America® offers your ideal Hawai'i cruise holiday. Say aloha to a sea of relaxation with our onboard hot tubs, saunas and the award-winning Mandara Spa®. Enjoy a dip in the pool, a jog around the outdoor track or a friendly game of volleyball whilst island-hopping. Get ready to enjoy four islands in seven days — with no sea days — giving you plenty of time to discover your slice of paradise. Then return on board and toast the spirit of Hawai'i with a Mai Tai at Waikiki Bar or at one of our other unique bars and lounges. From spacious luxury Suites and Family Balconies to Solo Studios, finding a stateroom to match your travel style is a breeze.

Cruising Hawaii Year-Round: As the only U.S. flagged cruise ship, Pride of America sails year round from Honolulu, giving you the freedom and flexibility to holiday on your timetable. Visit four Hawaiian Islands and five ports in seven days whilst you cruise through paradise in style.

Ship Facts

- Launch Year: 2005
- Refit Year: 2022
- Gross Tonnage: 80439
- Length: 280
- Width: 37
- Capacity: 2150
- Crew Count: 927
- Deck Count: 11
- Cabin Count: 1096

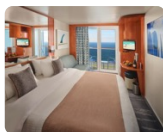


Accommodations

Balcony: Soak in the paradise that surrounds you. Floor-to-ceiling glass doors open to your very own sweeping balcony. Inside, your private, spacious room is well-appointed with style.

Obstructed Ocean-view: Picture this. Modern, comfortable and stylish staterooms with nice appointments throughout, including a window with an obstructed view.

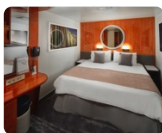
Inside: Enjoy island hopping in style and comfort. Thoughtful appointments inside include a TV and more.



Balcony



Obstructed Oceanview

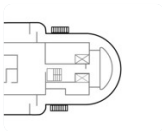


Inside

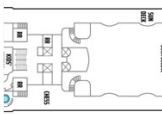
Deckplans



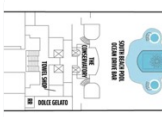
Deck 14



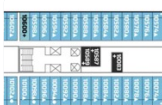
Deck 13



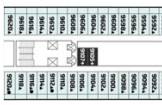
Deck 12



Deck 11



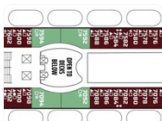
Deck 10



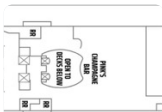
Deck 9



Deck 8



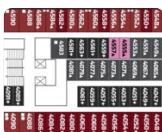
Deck 7



Deck 6



Deck 5



Deck 4

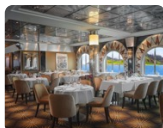
Dining Options

Extraordinary Dining Options: Pride of America offers a genuine Hawaiian culinary experience by serving local Hawaiian cuisine such as Pineapple Beurre Blanc with fresh seafood, papaya with Asian short ribs and a variety of tropical juices.

COMPLIMENTARY DINING: Serving a wide variety of culinary delights to please every palate, our complimentary dining options include two main dining rooms, a help-yourself buffet and a variety of casual cafés, grills and on-the-go choices. Plus, our Main Dining Rooms offer a menu that changes daily, Chef's Signature Dishes and carefully selected wine recommendations, guaranteeing a different culinary adventure with every visit.

Every cruise fare includes beautifully crafted menus in our two main dining rooms, a help-yourself buffet and a variety of casual cafés, grills and on-the-go choices. From fresh-baked breads, desserts and pastries to our chefs' original dishes made with the freshest ingredients, your dining can be as fine or fun as you want.

SPECIALITY DINING: Enjoy a night of gastronomic proportions at one of our many speciality restaurants. Sip your favourite cocktail as you select from choice cuts of Angus beef at Cagney's Steakhouse. Enjoy delicious pasta made with the freshest ingredients inside our chic Italian eatery, La Cucina. Or savour French cuisine at Jefferson's Bistro. No matter what you choose, our speciality dining options feature the tastes you'll crave.



Skyline Restaurant



Jefferson's Bistro



Cagney's Steakhouse



Key West Bar & Grill



Dolce Gelato



Liberty Restaurant



East Meets West



La Cucina



Room Service



Sushi

**Teppanyaki****Aloha Café****Cadillac Diner****John Adams Coffee Bar****Moderno Churrascaria**

Entertainment

With so many bars and lounges to discover, finding your favourite may take a few days. Pop some bubbly and toast to the good life inside Pink's Champagne Bar. Dance until the wee hours at New Orleans-inspired Mardi Gras Cabaret Lounge & Nightclub. Or hang loose with a Mai Tai at Waikiki Bar. Whether you're looking to meet up with friends or make new ones, there's always an opportunity to mix it up.

When it comes to the entertainment on Pride of America, there's never a dull moment. Tickle your funny bone during our comedy variety show inside the Hollywood Theatre. Enjoy a magical evening with our magician and comedy show. Or don your best white attire and dance the night away at one of our themed deck parties. With Norwegian, it's showtime. All the time.

Forget to pack something? No worries! Our gift shops onboard carry everything you'll need for fun in the sun. Shop from a variety of souvenirs, cosmetics, clothing, snacks and sundry items. Treat yourself at our duty-free shops full of fantastic savings on fine jewellery, accessories, perfume, liquor and tobacco.

**Aloha Lanai Bar****The Conservatory****Waikiki Bar****Deck Games****Shuffles Card Room**



Hollywood Theatre



Mardi Gras Cabaret Lounge & Nightclub



Napa Wine Bar



Ocean Drive Bar



Pink's Champagne Bar



Gold Rush Saloon



Internet Centre



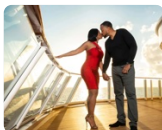
SS America Library



Kai Clothing



The Photo Gallery



Perspectives Studio



Professional Portraits



Blast Off Video Arcade



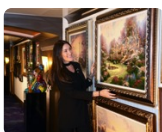
Island Treasures



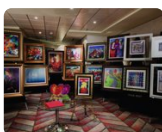
Na Hoku



Newbury Street Shops



Park West Gallery



SoHo Art Gallery

Health and Fitness

When you want some "me" time, look no further than Mandara Spa®. Relax with a hot-stone massage, one of over 50 speciality treatments offered. At our onboard spas, treatments range from the classic to the luxurious. Let our pampering professionals soothe and rejuvenate you with facials, massages, acupuncture and a full menu of services.

From top to bottom and from bow to stern, Pride of America has enough onboard activities to fill every minute of your cruise. Indulge in a refreshing swim at the Oasis Pool or the Miami-inspired South Beach Pool. Go for a run with the best views on the jogging track, or break a sweat at the Santa Fe Fitness Centre. And when all is said and done, enjoy a pamper session at Mandara Spa. With so much to do, we'll always have you coming back for more.

Useful to Know

See each category for more details.



Special Dietary Requirements



Alcohol and Beverage Policy



Packing Tips / Dress Code



Medical Facilities



Age Restrictions